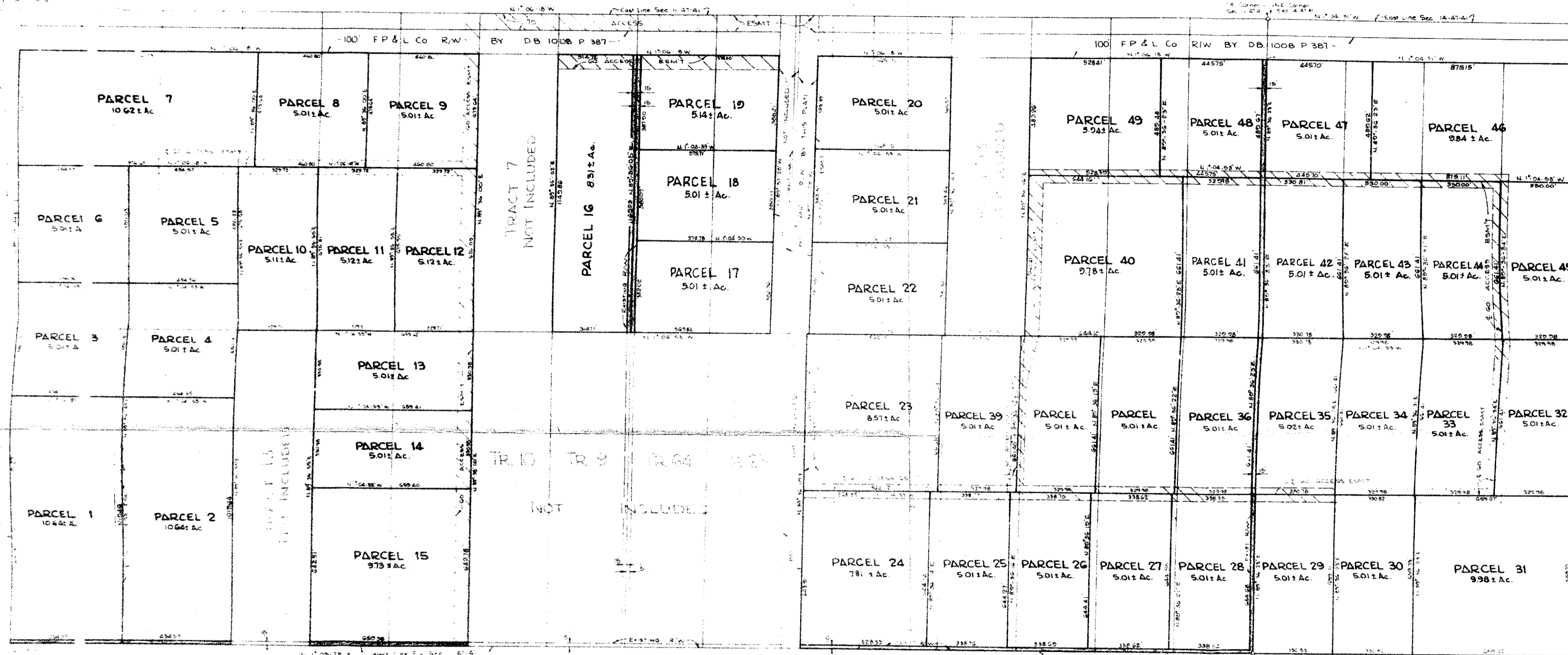


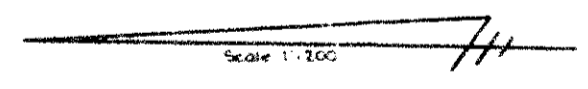
STARLING RANCHES SALES MAP

A PORTION OF SECTIONS 11 AND 14,
TWP. 47S., RGE. 41E., PALM BEACH CO., FLORIDA.



NOTES:
Information shown hereon based on Survey by
Winningsham & Lively, Inc. dated 11-20-71.
Tract NPs refer to plat of Florida Fruit Lands Co.
Subdivision N# 2, PB 1 at P 102, Palm Beach Co., Fla.

Straded rights of way have no width
shown on PB 1-102, but 15 feet is
generally accepted by Palm Beach Co.



SCHWEBKE-SHISKIN & ASSOC., INC.
LAND PLANNERS, SURVEYORS, ENGINEERS
Order N# 125042 Miami, Florida October, 1975
File N# B-276

OR Book 2507
Page 1561-1563